



CORPORATE OVERVIEW

PERFORMANCE DRIVEN

TABLE OF CONTENTS

- 3 Introduction
- 4 Corporate Overview

CORE VALUES

- 6 Our Core Values
- 7 Safety
- 9 Teamwork
- 10 Quality
- 11 People
- 12 Environment

BRIDGES

- 14 Bridges Overview
- 15 Recent Projects - Bridges

STRUCTURES

- 17 Structures Overview
- 18 Recent Projects - Structural Steel
- 19 Recent Projects - Structures

FOUNDATIONS

- 21 Foundations Overview
- 22 Recent Projects - Piling
- 23 Recent Projects - Concrete

CIVIL WORKS

- 25 Civil Works Overview
- 26 Recent Projects - Earthworks



PERFORMANCE DRIVEN

From concept to completion, Formula Contractors Ltd. delivers comprehensive construction services to industries in Forestry, Mining, Oil and Gas, Renewable Energy and Government.

Formula specializes in bridges, foundations, pile driving, structures, steel erection, earthworks, heavy civil construction and general contracting. Formula also provides equipment rental and Portable Bridge Rental & Sales.

Formula Contractors Ltd. has its head office in Prince George, British Columbia. Formula services Western Canada; geographically, our service area is from Manitoba west to the Pacific Ocean and USA border at the 49th parallel north to the Beaufort Sea including Yukon and NWT.



FORMULA

CONTRACTORS

CORPORATE OVERVIEW

Founded in 1977 by Peter Thwaites, Formula Contractors Ltd. (Formula) is a heavy civil and industrial construction company that provides construction services to municipal, civil, and resource based sectors for more than 40 years. Working primarily in Western Canada, Formula specializes in the construction of bridges, foundations, and structures, as well as structural steel erection, pile driving, and earthworks. Formula has a wealth of experience and knowledge to offer given the company's diverse project background and technical expertise. Within every project, Formula endeavours to provide Clients with professional quality products, as well as cost effective, smart solutions.

Formula is structured to serve our Clients from "Concept to Completion": from the construction and/or maintenance of simple structures to the completion of multi-million dollar ventures. Our offices in British Columbia and Alberta (Prince George, Grande Prairie, Sparwood, and Victoria) and yards (Prince George, Grande Prairie, and Pouce Coupe) enable Formula to offer a competitive and cost effective service, in order to satisfy the supply, equipment, and man power demands of any project.

Formula provides general contract services for: construction, mine site development, steel erection, industrial building construction and cladding, site reclamation and deactivation, rock revetment, retaining structures, foundations, pile driving, bridge construction, dragline dredging and general earth works. Our past projects range from the supply and installation of small, corrugated cross drain culverts, to the construction of multi-lane highway overpasses and associated road-works, to the design, supply, and installation of 200m long resource bridges and the construction of resource access roads. More recently,

Formula has been involved in the construction of large-scale renewable energy projects, such as the Bear Mountain Wind Farm (Dawson Creek, BC) and the Forrest Kerr Hydroelectric Project (Bob Quinn, BC). On average, Formula's annual revenue is \$35 million dollars.

To get the job done, Formula owns and operates a diverse fleet of modern construction equipment, ranging from compact dozers and excavators to 230 tonne crawler cranes. Formula owns 60 pieces of mobile equipment and employs 60-70 skilled personnel (on average). Formula is well equipped to provide the technical expertise, professional personnel, and cutting edge equipment to complete any job in the most economical, safe, and environmental manner.

Moreover, Formula has prioritized safety as a key company objective, and as such, has used safety as a planning tool in order to catalyze company growth and continual improvement. In doing so, Formula has been able to gather greater feedback from our employees and clients on what are doing well and where we can improve; experienced greater participation in the safety program at all levels; and most importantly, has experienced a vast improvement within our company health and safety record. To date in 2015, Formula has achieved a zero Total Recordable Incident Frequency (TRIF) while recording more than 80,000 working hours.

Given these strengths, in combination with our performance record, strong bonding and insurance capabilities, and sterling references, Formula would be a valuable asset to any construction project. As such, Formula is confident in our Company's ability to supply the services, equipment, personnel, and materials required to ensure "Concept to Completion" within all projects we are involved in.



CORE VALUES

OUR CORE VALUES

For more than Forty Years, the Formula management team, in conjunction with field operations, has delivered its industry leading technical expertise, cost control and unparalleled customer service with five overriding corporate objectives:

Safety, Teamwork, Quality, People, and Environment



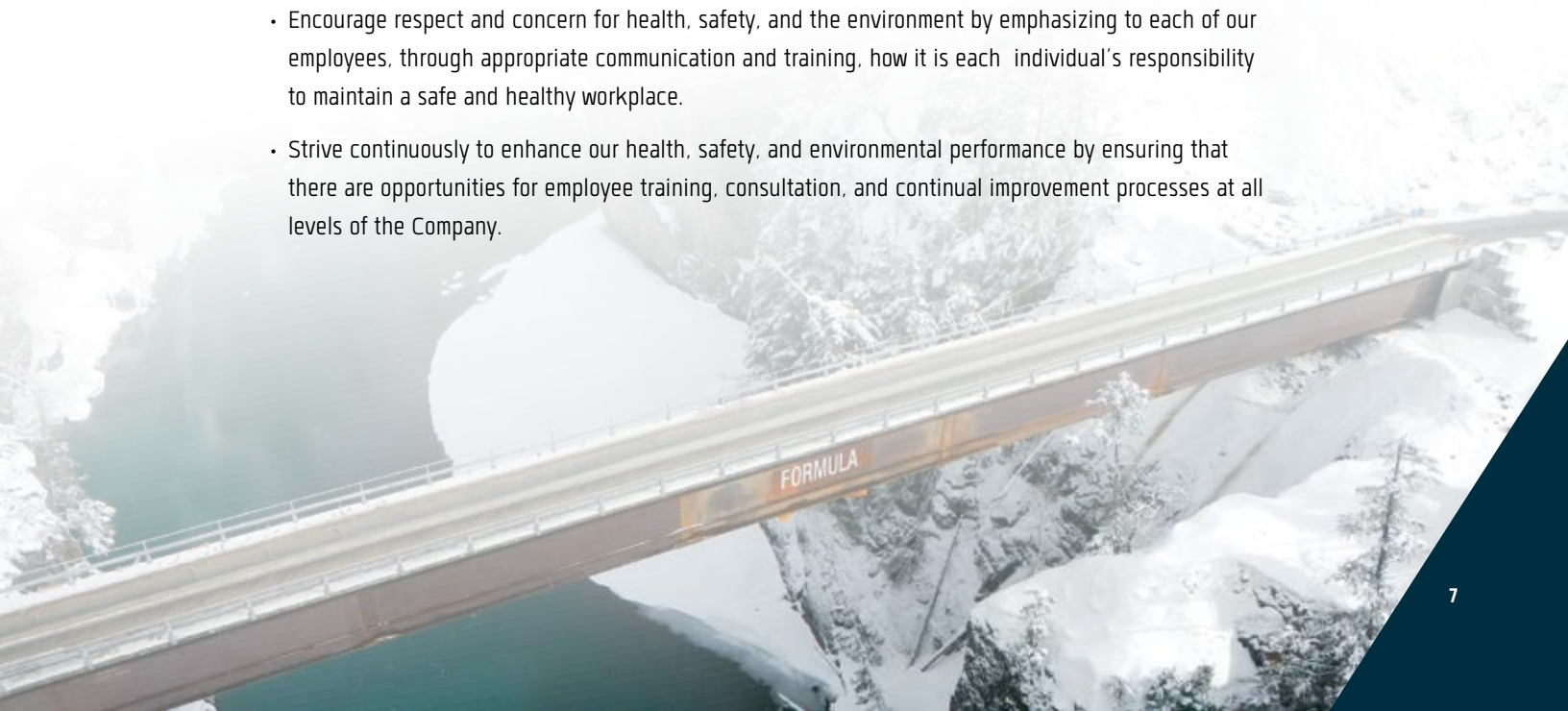
SAFETY

Formula is committed to the development and maintenance of an effective Health, Safety and Environmental program that protects the well-being of our workers, communities, and the environment. Through continual improvement processes focused on health, safety, and environmental performance, Formula strives to enhance the quality of our products and services in an effort to exceed customer expectations in both environmental protection and business performance.

Formula is committed, as a company and as individuals, to conduct our business in compliance with, and where practical to exceed, all applicable health, safety, and environmental laws and regulations in order to provide a safe and healthy work environment. Formula acknowledges the importance of these laws, regulations, and standards in safeguarding human health, wildlife, and natural resources. As such, our company is committed to observe them faithfully as an integral part of our business and of our values. Where such laws or regulations do not exist, Formula is committed to employing responsible standards.

At Formula we shall:

- Make health, safety, and environmental considerations a priority in our business planning and in the design and implementation of our projects.
- Manage our business with the objective of providing a healthful and safe workplace for our employees, preventing accidents and environmental incidents, and controlling emissions and wastes.
- Be prepared to respond timely and appropriately to incidents resulting from our operations.
- Ensure that all workplace parties are accountable to workplace health and safety standards, roles, and responsibilities as outlined within the Company Health and Safety Management System Manual(HSMS).
- Encourage respect and concern for health, safety, and the environment by emphasizing to each of our employees, through appropriate communication and training, how it is each individual's responsibility to maintain a safe and healthy workplace.
- Strive continuously to enhance our health, safety, and environmental performance by ensuring that there are opportunities for employee training, consultation, and continual improvement processes at all levels of the Company.



SAFETY

Formula believes that all employees have the right and responsibility to participate in, and be accountable to, the Company's Health & Safety program. Moreover, in the spirit of consultation and cooperation with Employees, Formula acknowledges the rights of employees to be made aware of all hazards present within the workplace, as well as their right to no retaliation if they choose to exercise their right to refuse unsafe work.

To remain on the cutting edge of the civil/industrial construction industry, Formula maintains active memberships with, and is continuously monitored by, ISNetwork, CQN, Comply Works and PICS Auditing, as well as holds Large Company COR Certified through the BC Construction Safety Alliance (BCCSA) and Large Company SAFE Certified by the BC Forest Safety Council.



TEAMWORK

We empower our team members to “own the problem.” We achieve our best results through collaboration with all stakeholders. We have fun doing what we do.



QUALITY

It is the policy of Formula to provide the highest quality product and customer service possible. We accomplish this by being committed to ensuring the satisfaction of our customers, as well as by continuously improving our products, service, and Quality Management System (QMS) through our adherence to the ISO 9001 quality standard.

Formula detailed procedures, instructions and controls, in every phase of our operations, provide the framework for our Company's QMS and ensure the quality of our products and services. Additionally, our Company believes that everyone has a role to play in ensuring the highest quality products and services. As such, Project Managers, Superintendents, Supervisors, and Foreman are responsible for ensuring that all requirements of Health & Safety Management System (HSMS) Manual are correctly implemented, in order to produce a safe, high quality product. Moreover, every employee is responsible for ensuring that quality is maintained in our daily activities and that our continuous improvement process is followed at all times.

At Formula we shall:

- Provide the best products available to our customers, meeting or exceeding all requirements for time schedules, cost effectiveness, quality;
- Communicate to all employees the importance of meeting statutory and regulatory requirements;
- Provide a positive, progressive, and safe working environment for our employees through a harmonious atmosphere of mutual respect;
- Review the Quality Policy and the QMS, including our quality objectives and targets, on a regular basis.

PEOPLE

Formula invests in its employees as partners in the success of our company. Learning is core, and developing the best leaders while realizing the full potential of our people is paramount to our success. We hire people based on qualifications and without prejudice.

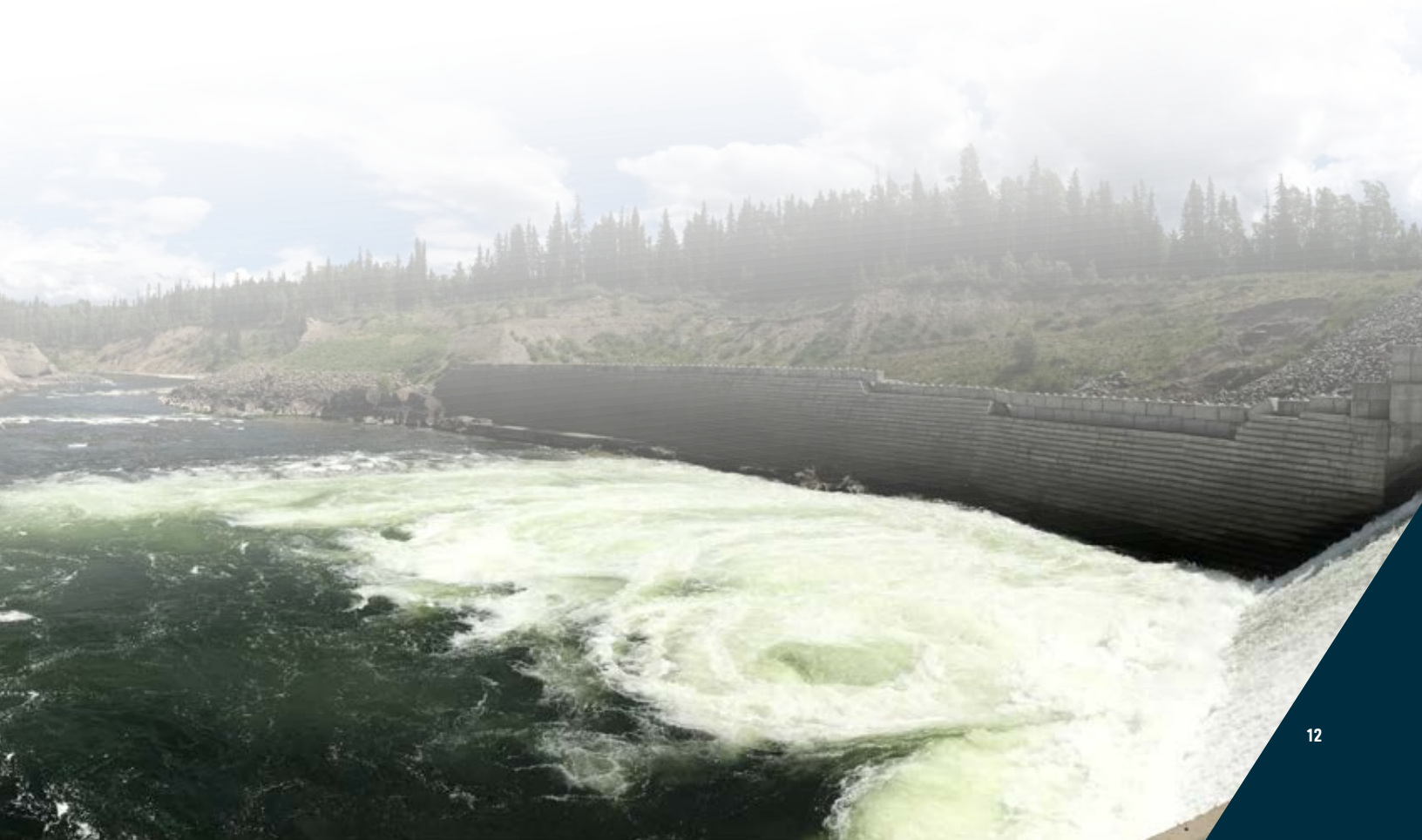
People are our primary asset!



ENVIRONMENT

Formula practices environmental responsibility as one of our company's core values. As such, Formula is committed to operating in compliance with our contractual requirements, as well as legislative and regulatory agency standards within the jurisdiction we are working in, in order to protect the health and safety of our workers, the public, and the environment. Formula emphasizes the prevention of environmental problems, given that prevention is the most effective way to reduce or eliminate the potential for an emergency to occur. Additionally, Formula ensures that appropriate emergency planning is completed and communicated prior to the commencement of work, in compliance with applicable environmental laws.

Given that bridge construction is the largest component of our company business, Formula undertakes every aspect of construction with the vigor to complete projects with the least impact to the environment. This is done through continual monitoring and record keeping of operations to ensure the effective standards and the understanding of environmental issues is maintained through education of environmental regulations, construction procedures and use of environmentally safe construction materials. All work is completed in strict guidance with the engineered drawings and specifications, good engineering practice and in accordance with the Fish Habitat Manual Guidelines and Procedures for Watercourse Crossings in British Columbia.



BRIDGES

FORMULA

BRIDGES OVERVIEW

Formula is able to provide our customers with cost-effective and innovative bridge construction solutions. With over 40 years of construction experience, Formula has economically designed, constructed, and installed the most suitable bridge structures for sectors such as:

- Oil and Gas
- Mining
- Forestry
- Renewable Energy Production
- Government Projects

Formula can provide:

- Rental bridge structures ranging from 6.0 meters to 30.0 meters in length. These structures have a standard deck width of 4.3 meters and are designed to either a 75 ton or 100 ton load rating.
- Steel Superstructure Bridges with Wooden, Steel, Precast and/or Cast in Place Concrete Decks.
- Precast Pre-stressed Concrete Box Beam Structures
- Precast Slab Type Bridges

We have the technical expertise to complete cost-effective renovations and emergency repairs to existing structures with minimal impact to traffic flows.

SPECTRA AERIAL PIPE BRIDGE PROJECT

Client: Triple J Pipeline
Category: Bridges
Completion: April 2017
Value: \$3,000,000
Client Rep: Triple J Pipelines
PH: 250-784-1890

Description:

Construction of 187 m long aerial pipe bridge for Spectra (Enbridge) across the Pine River. Project consisted of supply and install of pile foundation, design and construct pier system, and erect pier trusses.



A construction worker wearing a hard hat and safety harness is working on a large, complex metal structure. The worker is positioned on a platform, and a ladder is visible in the background. The entire image is overlaid with a dark blue tint. The word "STRUCTURES" is written in large, white, bold, sans-serif capital letters across the center of the image.

STRUCTURES

STRUCTURES OVERVIEW

Formula specializes in innovative, cost effective, project specific culverts and drainage structures. These objectives are achieved through the skilled design and installation of structures that account for:

- Environmentally Sensitive Initiatives
- Minimal Site Disturbance
- Safe Fish Passage

Structures that Formula is able to construct/install include:

- Multit-plate and Culvert installation
- MSE walls
- Lock Block Walls
- Engineered Cast in Place Walls

STRUCTURAL STEEL ERECTION

Formula has the man power, equipment, and expertise to provide structural steel erection for both industrial plants and buildings, including steel building cladding.

GIRDER ERECTION

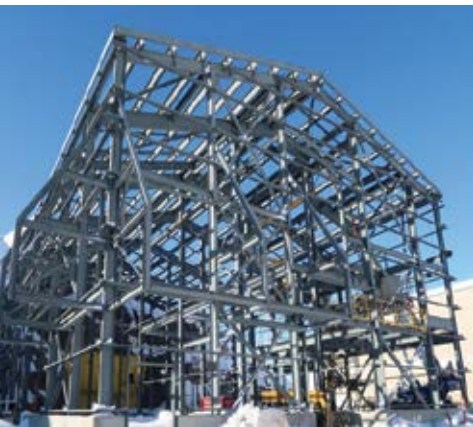
Formula has successfully completed the installation of girders up to 220 meters in length, in addition to crane erected structures, technical girder launching using rollers, cantilevering, skylines and temporary shoring towers. Our projects are engineered for each site based on its specific requirements and available equipment.

BRUCEJACK MINE MILL BUILDING INTERNAL STEEL PROJECT

Client: Pretivm Exploration Inc.
Category: Structural Steel
Completion: In Progress
Value: \$31,000,000
Client Rep: Dave Prins
PH: 778-724-4186 ext. 795

Description:

Formula Contractors was awarded the supply and fabrication, including the engineering and design of all the required connections and all coatings, of all the internal structural and external portal building steel framing, platforms, floor decking, floor grating, stairs, guardrails, ladders, and other miscellaneous structural steel items at the Brucejack Mine Project. During the period of the project Formula managed the supply on an accelerated of approximately 1,800,000 kg of structural steel, 3,800 m² of grating, 4,400 m² of elevated deck, 3,500 lm of handrail with kick plate and 254 vm of stairs. The installation of this material was completed primarily with Formula labor and equipment.



MT. MILLIGAN MINE MSE WALL PRIMARY CRUSHER PROJECT

Client: Thompson Creek Metals/Duz Cho Construction LLP
Category: Mining
Location: Fort St. James, BC
Completion: 2012
Value: \$1,400,000
Client Rep: Chris Leatherdale, Duz Cho Construction LLP
PH: 250-262-5557

Description:

The project involved the construction of a 5200 m² RECO MSE Wall for the Mt. Milligan Mine – Primary Crusher Tower. The structure is 40 m tall by 200 m long with 200,000 m³ of structural fill. There were over 3800 structural baskets and 8 km of structural straps installed.



A construction site at dusk or dawn. A large crane is on the left, and a building is under construction in the center. The background shows a forested hill under a cloudy sky. The word "FOUNDATIONS" is overlaid in large white letters.

FOUNDATIONS

FOUNDATIONS OVERVIEW

PILING

Formula owns and operates a range of pile installation equipment. Truck and track mounted cranes are available with drop, diesel, air, churn, vibro hammer, helical and drill type configurations. We are able to provide pile construction services for:

- Bridge Structures
- Foundations
- Mill and Oil Field Construction
- Retaining Structures
- Other Services

Formula can supply and install steel pipe, timber, H-type, helical and sheet piling. Formula also provides foundation drilling services with a Soilmec SR-30 drill which is capable of drilling for cast-in-place concrete piles, cased bored piles, pile pre-drilling and pile cleanout. Our team is comprised of certified crane operators and ticketed trades people that are available for projects throughout Western Canada.

CONCRETE

Formula can provide concrete foundation construction for:

- Cast in Place Concrete, including:
 - Slabs
 - Footings
 - Retaining Walls
 - Suspended Slabs
- Cast in Place Caissons, Earthen or Cased, including optional Grade Beam
- Onsite Concrete Batching
- Quality Management

BLIND CORNER DRILLED PILES PROJECT

Client: Petro West Construction BC

Category: Piling

Completion: April 2017

Value: \$900,000

Client Rep: John McPherson

PH: 250-787-0254

Description:

Supply and Install 110 locations of 18" diameter drilled piles which were socketed into a shale formation to help prevent a slope stability issue at the Site C Hydroelectric Project.



BEAR MOUNTAIN WIND FARM PROJECT

Client: Bear Mountain Wind Energy/Alta Gas/Aeolis.
Category: Renewable Energy
Location: Dawson Creek, BC
Completion: April 2008
Value: \$22,000,000
Client Rep: Nils Wingert, Enercon (now with Enmax)
PH: 877-571-7111

Description:

Construction of the first ever wind farm tower foundations poured in BC. Foundations included 13,000 m3 of on-site batched and placed concrete and 1.25 million kg of reinforcing steel. Additional project scope included: all civil earthworks; grounding and earthing systems for tower and substation foundations; supply and install cast in place concrete, and reinforcing steel; chain link fence and structural steel. All foundations were completed ahead of schedule.



A construction worker wearing a hard hat with various stickers, a safety harness, and a t-shirt with 'MILWRIGHTS LIMITED' on it, is working on a structure. The image is overlaid with a dark blue tint. The text 'CIVIL WORKS' is prominently displayed in the center.

CIVIL WORKS

CIVIL WORKS OVERVIEW

RESOURCE ACCESS + DEVELOPMENT

Formula provides general contract services in areas such as:

- Road Construction and Maintenance, including:
 - Ditching, rip rap, snow removal, gravelling, grading, base repairs, etc
- Site Services, including:
 - Water, Sewer and storm sewer component installations
- General earthworks and/or mass excavation
- Mine Site Development
- Railway Siding and Mainline Grade Construction
- Reclamation & Deactivation
- Rock Revetment
- Dragline Dredging & Marine Dredging
- Sediment & Tailings Pond Construction
- Water Management, including Dewatering and Diversions
- Stream Channel Construction, Revitalization, and HADD Works

EQUIPMENT

Our modern fleet of earth moving equipment includes:

- Excavators
- Breakers
- Dozers
- Packers
- Articulated Dumps
- Cranes;

For your convenience, we can provide hourly or contract pricing and are available for projects throughout Western Canada.

FORREST KERR DESANDER PROJECT

Client:	AltaGas, Coast Mountain Hydro Electric
Category:	Renewable Energy
Location:	Bob Quinn, BC
Completion:	2012
Value:	\$25,000,000
Client Rep:	Lorne Kelly, AltaGas
PH:	604-623-4773

Description:

The project scope included: participation in a 1,000,000 m3 civil excavation for the sluiceway, desander, and intake area of run of river project; construction of a 254m long twin sheet pile earthen filled coffer dam, supported with dywidag tie rods and c channel whalers (between 10-14 m wide and 8-25 m tall); water management via installation of four 1.2m x 12m deep caissons, tied into a custom HDPE, Victaulic pipe, and steel pipe dewatering piping system with several pumps. These works enabled a compressed construction schedule and prepared the site for the installation of the concrete infrastructure for the river diversion and instream weir in the low water season.





Phone: (250) 561.2933 | 1 (877) 761.2933
9157 Rock Island Rd, Prince George, BC V2N 5T4

formulacontractors.com